

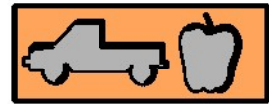
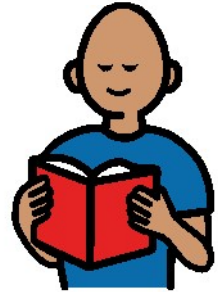
My school is closed.



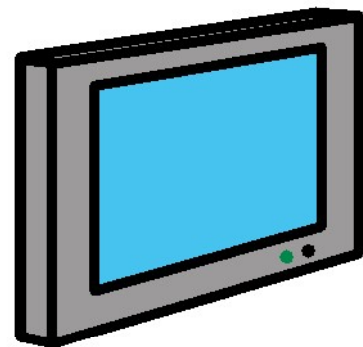
At the moment my school is closed.  
This means I cannot go to school.



I will stay at home. When I am at home I can do school work sent from my teacher.



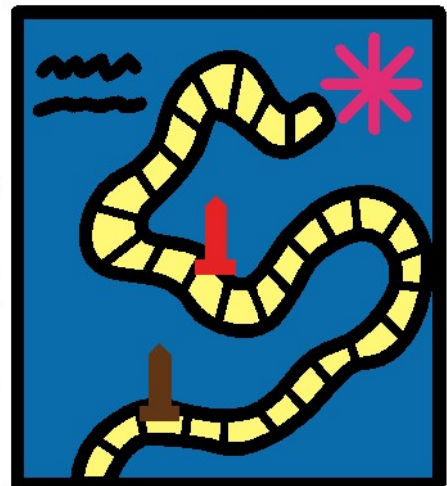
I can use technology.



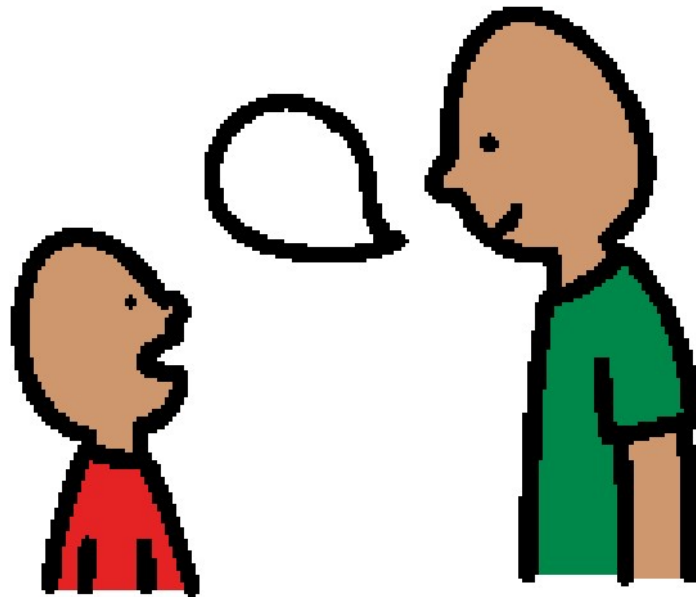
I can play in my garden.



I can play indoor games.



An adult will tell me when my school is open again.  
When it is open I can go back to school.



When I go back to school I can tell my teachers and  
friends about all the things I did at home.

